



numatics

We're everywhere you need us to be!

Cylinders



***Cylinders
to VDMA 24562
and DIN/ISO 6431***

ISO 9001 2000



Certificate No. FM 38113



Cylinders to VDMA 24562 and DIN/ISO 6431



General Information

Technical Data:

- Cylinders to VDMA 24562 and DIN/ISO 6431
- Piston diameters from 32 to 320 mm (stainless steel version piston diameters 32 to 125 mm)
- Double acting
- Single and double rod end
- Up to piston diameter 125 mm, piston rod stainless steel (X20Cr13), burnished starting at piston diameter 160 mm and GeoMetric® cylinder, piston rod hard chrome plated
- Barrel made from anodised aluminium with wear resistant coating
- On request with magnetic and proximity switching
- Flush mounting switch in cylinder (profile version cylinder)
- All cylinders with adjustable cushioning
- Medium: filtered, lubricated or non lubricated compressed air
- -20 °C to +80 °C ambient temperature, optional up to 140°C (Viton®-gaskets)
- Max. 80 °C medium temperature
- 0.8 to 10 bar operation pressure
- Gaskets made from NBR and polyurethane
- Mounting nut included (not for stainless steel cylinder)
- Pre-lubricated for life - for use with oil-free air. (Attention: Once lubricated air has been used then continuous lubrication will be required.)
- Cylinder acceptance test conforming to ISO 10099



GeoMetric® Cylinder, Profile Version

Piston Diameters 32 to 125 mm
with single or double rod end



Cylinder, Profile Version

Piston Diameters 32 to 100 mm
with single or double rod end
(series not continued)



Cylinder, Tie-Rod Version

Piston Diameters 32 to 320 mm
with single or double rod end











Stainless Steel Cylinder, Tie-Rod Version

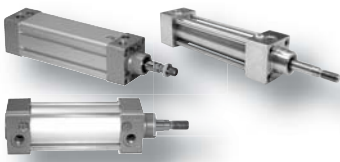
Piston Diameters 32 to 125 mm
with single or double rod end



Contents

Series	Description	Page
	General Information	68
	Cylinders to VDMA 24562	
	Overview	70
	GeoMetric® Cylinder	
	Double acting, Piston diameter 32 to 125 mm	72
	Profile Version	
	Double acting, Piston diameter 32 to 100 mm	74
	Tie-Rod Version	
	Double acting, Piston diameter 32 to 320 mm	76
	Accessories	
	All Series	
	Guide Units	78
	Locking Units	82
	Mounting Parts	84
	Spare Parts	92
	Flow Control	93
	Switches and Sensors	95
	Switches and Sensors for Tie-Rod Version	96
	Brackets for Switches and Sensors	97
	Cords	97
	Stainless Steel Tie-Rod Version	
	Overview	98
	Double acting, Piston diameter 32 to 125 mm	100
	Accessories	
	Mounting Parts	102
	Spare Parts	106
	All Series	
	Technical Information	107

Subject to change without notice. Not liable for printing errors



Cylinders to VDMA 24562 and DIN/ISO 6431



Overview

How to Order: (example)

G

Cylinder Series

- G**¹⁾ = GeoMetric® Profile version **NEW**
- W*** = Profile version (to be discontinued)
- Z** = Tie-rod version

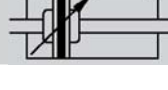
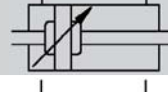
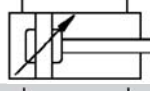
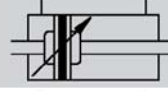
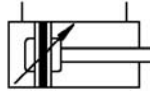
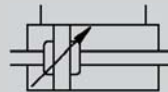
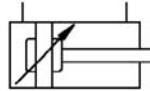
¹⁾ diameter 125 mm available 1st quarter 2006
* only for cylinders diameter 32 to 100 mm

G

Cylinder Type

Cylinder Function

- A** = Heat resistant type up to +140 °C (VITON®-gaskets), single rod end w/o magnetic piston
- B** = Heat resistant type up to +140 °C (VITON®-gaskets), double rod end w/o magnetic piston
- C** = Version for low temperature to -30 °C, single rod end with magnetic piston
- D** = Version for low temperature to -30 °C, double rod end with magnetic piston
- E** = Single rod end w/o magnetic piston
- F** = Double rod end w/o magnetic piston
- G** = Single rod end with magnetic piston
- H** = Double rod end with magnetic piston



050

Piston Diameter

- 032** = 32 mm
- 040** = 40 mm
- 050** = 50 mm
- 063** = 63 mm
- 080** = 80 mm
- 100** = 100 mm
- 125** = 125 mm
- 160*** = 160 mm
- 200*** = 200 mm
- 250*** = 250 mm
- 320*** = 320 mm

* only for tie-rod version

/

Piston Diameter Type

- /** = 32 to 125 mm (Standard)
- X** = 32 to 125 mm to ATEX 95 / 94/9/EG*
- A** = 160 to 320 mm (Standard)
- Y** = 160 to 320 mm to ATEX 95 / 94/9/EG*

* More information see page 189



Cylinder Type G (Series GeoMetric®)

NEW

Weights [kg] incl. Nut for Piston Rod

Cylinder Type GA; GC; GE or GG, Piston Diameter	32	40	50	63	80	100
0 mm stroke	0.56	0.90	1.40	1.80	2.90	4.40
To be added per 100 mm stroke	0.30	0.40	0.50	0.58	0.94	1.01

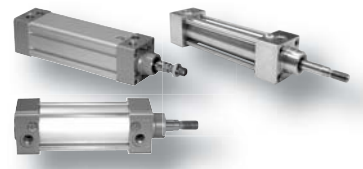
Cylinder Type GB; GD; GF or GH, Piston Diameter	32	40	50	63	80	100
0 mm stroke	0.65	1.02	1.60	2.10	3.20	4.90
To be added per 100 mm stroke	0.38	0.56	0.70	0.82	1.32	1.45

Cylinder Type WA; WC; WE or WG, Piston Diameter	32	40	50	63	80	100
0 mm stroke	0.57	0.82	1.32	1.70	2.79	3.86
To be added per 1 mm stroke	0.003	0.004	0.006	0.006	0.009	0.011

Cylinder Type WB; WD; WF or WH, Piston Diameter	32	40	50	63	80	100
0 mm stroke	0.65	0.93	1.57	1.98	1.92	4.34
To be added per 1 mm stroke	0.004	0.006	0.008	0.008	0.011	0.015

Cyl. Type ZA; ZC; ZE or ZG, Piston Diameter	32	40	50	63	80	100	125	160	200	250	320
0 mm stroke	0.55	0.76	1.29	1.67	2.72	3.70	5.37	11.20	20.50	29.00	69.50
To be added per 1 mm stroke	0.002	0.003	0.005	0.005	0.008	0.009	0.014	0.012	0.030	0.035	0.065

Cyl. Type ZB; ZD; ZF or ZH, Piston Diameter	32	40	50	63	80	100	125	160	200	250	320
0 mm stroke	0.68	0.88	1.54	1.95	3.15	4.18	6.27	11.40	21.00	30.00	72.00
To be added per 1 mm stroke	0.003	0.005	0.008	0.008	0.012	0.012	0.020	0.024	0.060	0.070	0.130



Overview

0080

Stroke*

0025	=	25 mm
0032	=	32 mm
0040	=	40 mm
0050	=	50 mm
0063	=	63 mm
0080	=	80 mm
0100	=	100 mm
0125	=	125 mm
0160	=	160 mm
0200	=	200 mm
0250	=	250 mm
0320	=	320 mm
0400	=	400 mm
0500	=	500 mm

* further strokes on request

000

Cylinder incl. Mounting parts

Mounting Parts Type

000	=	Cylinder w/o mounting parts	—
C01	=	Foot bracket (outside) to VDMA 24562 T.2 (MS)	VC01/...
CF2	=	Flange (front side) to VDMA 24562 T.2 (MF1, MF2)	VC02/...
CR2	=	Flange (back side) to VDMA 24562 T.2 (MF1, MF2)	VC02/...
C03	=	Foot bracket (plain)	VC03/...
CF4	=	Rod clevis (front side) to DIN/ISO and VDMA	SC04/...
CD4	=	Rod clevis (only type F and H)	SC04/...
CF5	=	Oscillating clevis (front side)	SC05/...
CD5	=	Oscillating clevis (both side) (only type F and H)	SC05/...
C07	=	Oscillating bracket (with lugs) to VDMA 24562 T.2 (MP4)	VC08/...
C08	=	Oscillating bracket (fork type) to VDMA 24562 T.2 (MP2)	VC08/...
C09	=	Pivot to VDMA 24562 T.2 (MT4) (only for of tie-rod version)	ZC09/...
CV9	=	Pivot, swivellable to VDMA 24562 T.2 (MT4)	ZCV9/...
C13	=	Oscillating joint bracket (spherical)	VC13/...
C14	=	Oscillating bracket, narrow clevis fork type to VDMA 24562 T.2 (MP2)	VC14/...
BOO*	=	With extended piston rod for future mounting of locking unit	—
BMV*	=	Locking units mounted to cylinder	BMV/...

*Not available for cylinder type opt. "A", "B", "C" and "D"

00

Options*

00	=	w/o options
A1	=	Hard chrome plated piston rod
A2	=	piston rod of Stainless steel (1.4305)
B5	=	Piston rod extended by 20 mm
E1	=	Cylinder w/o cushioning
6K	=	Hex wrench area
K2	=	Additional metal scraper
N1	=	Low friction grease
N2	=	Grease for food processing

* further options on request



Cylinder Type W
(series not continued)



GeoMetric® Cylinder
with Locking Unit (BMV)



Cylinder Type Z

Order example: **WG050/008000000**

This refers to a double acting profile version cylinder with single rod end.

Piston diameter is 50 mm and stroke 80 mm.

The cylinder is equipped with a sensor for proximity switching and has cushioning.