

# STS-double filter

## SITEK - DOUBLE FILTER

Sitek Double Filter is designed for filtration of compressed air before pneumatic devices and junction boxes. It is excellent for devices requiring high degree of filtering, such as digital positioners and converters.

Compact construction, including parallel filters and three way valve with one hand lever, facilitates easy on-line filter element change and secures trouble-free compressed air supply.

Sitek - Double Filter is easy to install. It can be equipped with an output pressure gauge and a pressure switch to indicate the contamination of the filter in operation.

The display glass on the side of the strong metal filter cup facilitates the control of the condition.

Filter element has to be changed when the output pressure has decreased to the specified min. operation pressure.

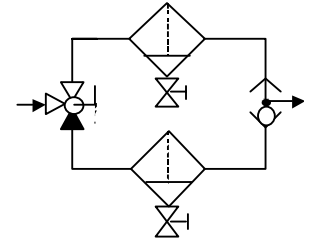


### TECHNICAL DATA

Connections	Input / Output	1/2", 3/4" G/R (NPT)
Capacity	5,0 µm	4316 NI / min Cv 4,4
Operating pressure		max. 14 bar
Temperature range		+ 5 ... 80 °C
Dimensions		220 x 350 x 280 mm
Weight		1/2" ~4,5kg      3/4" ~4,8kg

### Double Filters

FILTER ELEMENT	TYPE CODE	TYPE CODE FOR SPARE FILTER
0,1 µm	STS F32 01G04M	0,1 µm EKF32E
0,3 µm	STS F32 03G04M	0,3 µm EKF32D
0,7 µm	STS F32 07G04M	0,7 µm EKF32C
1,0 µm	STS F32 1G04M	1,0 µm SFE-321
3,0 µm	STS F32 3G04M	3,0 µm SFE-323
5,0 µm	STS F32 5G04M	5,0 µm EKF32B



Standard construction: Drain Valve ( Needle Valve ), Mounting Bracket and Filter Element

### TYPE CODE ( Options without S-character )

**STS F325 G04M - P - PM - P - PK**

Product series Filter element <table border="1" style="width: 100%;"> <tr><td>F3201</td><td>0,1 µm</td></tr> <tr><td>F3203</td><td>0,3 µm</td></tr> <tr><td>F3207</td><td>0,7 µm</td></tr> </table> Filter type <table border="1" style="width: 100%;"> <tr><td>G04</td><td>1/2"</td></tr> <tr><td>G06</td><td>3/4"</td></tr> </table>	F3201	0,1 µm	F3203	0,3 µm	F3207	0,7 µm	G04	1/2"	G06	3/4"	<table border="1" style="width: 100%;"> <tr><td>F321</td><td>1 µm</td></tr> <tr><td>F323</td><td>3 µm</td></tr> <tr><td>F325</td><td>5 µm</td></tr> </table>	F321	1 µm	F323	3 µm	F325	5 µm	<table style="width: 100%;"> <tr> <td style="width: 33%;"></td> <td style="width: 33%;"></td> <td style="width: 33%;">Pressure Switch</td> </tr> <tr> <td></td> <td></td> <td>Shut-Off Valve for Pressure Gauge</td> </tr> <tr> <td></td> <td></td> <td>Pressure Gauge</td> </tr> <tr> <td></td> <td>Drain Valve</td> <td></td> </tr> <tr> <td></td> <td><b>P</b></td> <td>Needle Valve replaced by Ball Valve</td> </tr> </table>			Pressure Switch			Shut-Off Valve for Pressure Gauge			Pressure Gauge		Drain Valve			<b>P</b>	Needle Valve replaced by Ball Valve
F3201	0,1 µm																																
F3203	0,3 µm																																
F3207	0,7 µm																																
G04	1/2"																																
G06	3/4"																																
F321	1 µm																																
F323	3 µm																																
F325	5 µm																																
		Pressure Switch																															
		Shut-Off Valve for Pressure Gauge																															
		Pressure Gauge																															
	Drain Valve																																
	<b>P</b>	Needle Valve replaced by Ball Valve																															



Sitek-Service Ltd.  
 Laukaantie 4  
 Hatanpäänvaltatie 34 A  
 E-mail: [sitek@sitek.fi](mailto:sitek@sitek.fi)

40320 Jyväskylä Finland  
 33100 Tampere Finland  
[www.sitek.fi](http://www.sitek.fi)

Tel. +358 14 337 2300  
 Tel. +358 3 265 4069

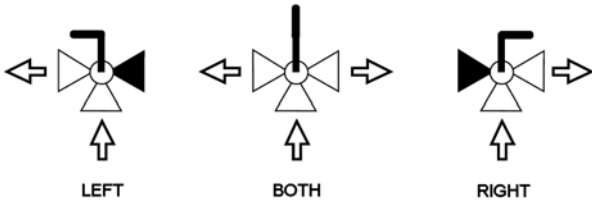
## OPTIONS

PART	TYPE CODE	DESCRIPTION
Drain Valve	SPV R 1/8 F-M *	Ball valve R1/8" F-M
Pressure Gauge	SPM-10 R 1/4 A50	0 - 10 bar R1/4", Ø50 mm
Shut-Off Valve	SPV R 1/8 F-M	Ball valve R1/8" F-M
Pressure Switch	SPK-10 R 1/4	0,5 - 10 bar R1/4", adjustable

\*Types and options **M** = male and **F** = female , e.g. R 1/8" **M**

### HAND LEVER POSITIONS

The position of the hand lever indicates the filter in operation.



### CHANGING THE FILTER ELEMENT

**WARNING:**  
**TO AVOID ACCIDENT, do not open the bowl while it is pressurized!**

Filter should be maintained, when output pressure is going lower than the needed pressure of equipments to be supplied.

1. Turn the switching valve lever towards the filter to be in operation ( clean filter ).
2. Before opening the bowl, empty and depressurise the bowl of the dirty filter by opening the needle valve.

**The needle valve opens clockwise.**

3. The bowl opens by turning it counter-clockwise and pulling locking button down.

### Dimensions

[ 3/4" size in square brackets]

